

PARTS LIST

Rechargeable Cordless Cleaner

SC-JS2B (U.S.A.)

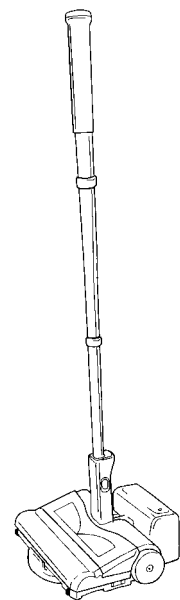
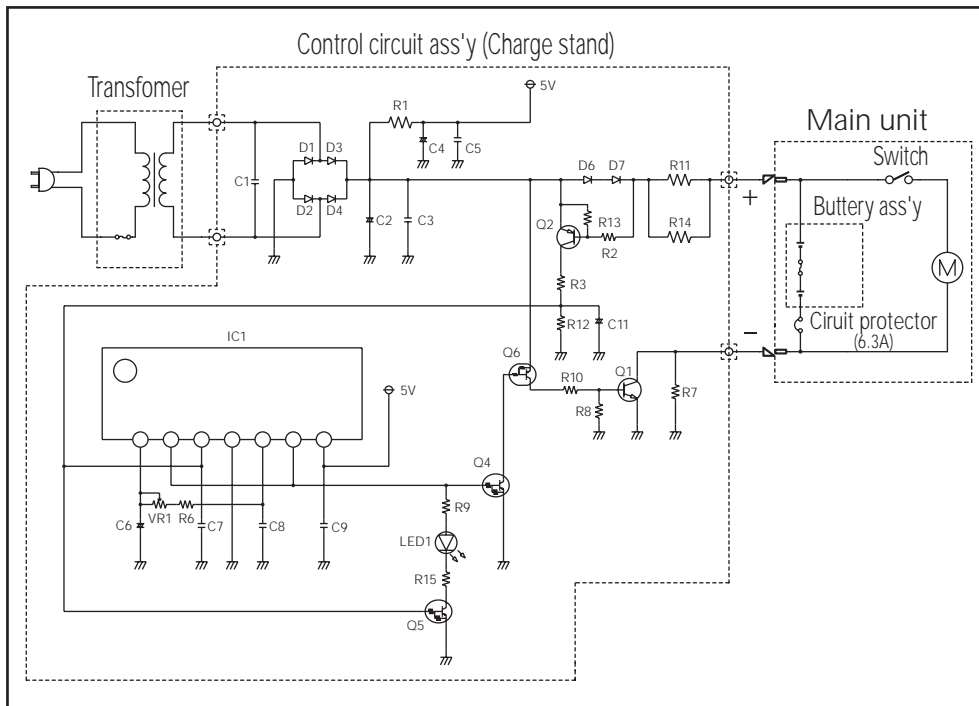
Specifications

| | |
|-------------------------|---------------------------|
| Power source | : AC 220 V 50 Hz |
| Power consumption | : 4.2 W |
| Dimensions L X W X H | : 150 X 240 X 1,050 mm |
| Net weight | : 0.9 Kg |
| Attachment | : Grip pipe, Charge stand |

PRODUCT CODE NO.

1 - 661 809 08 (L)

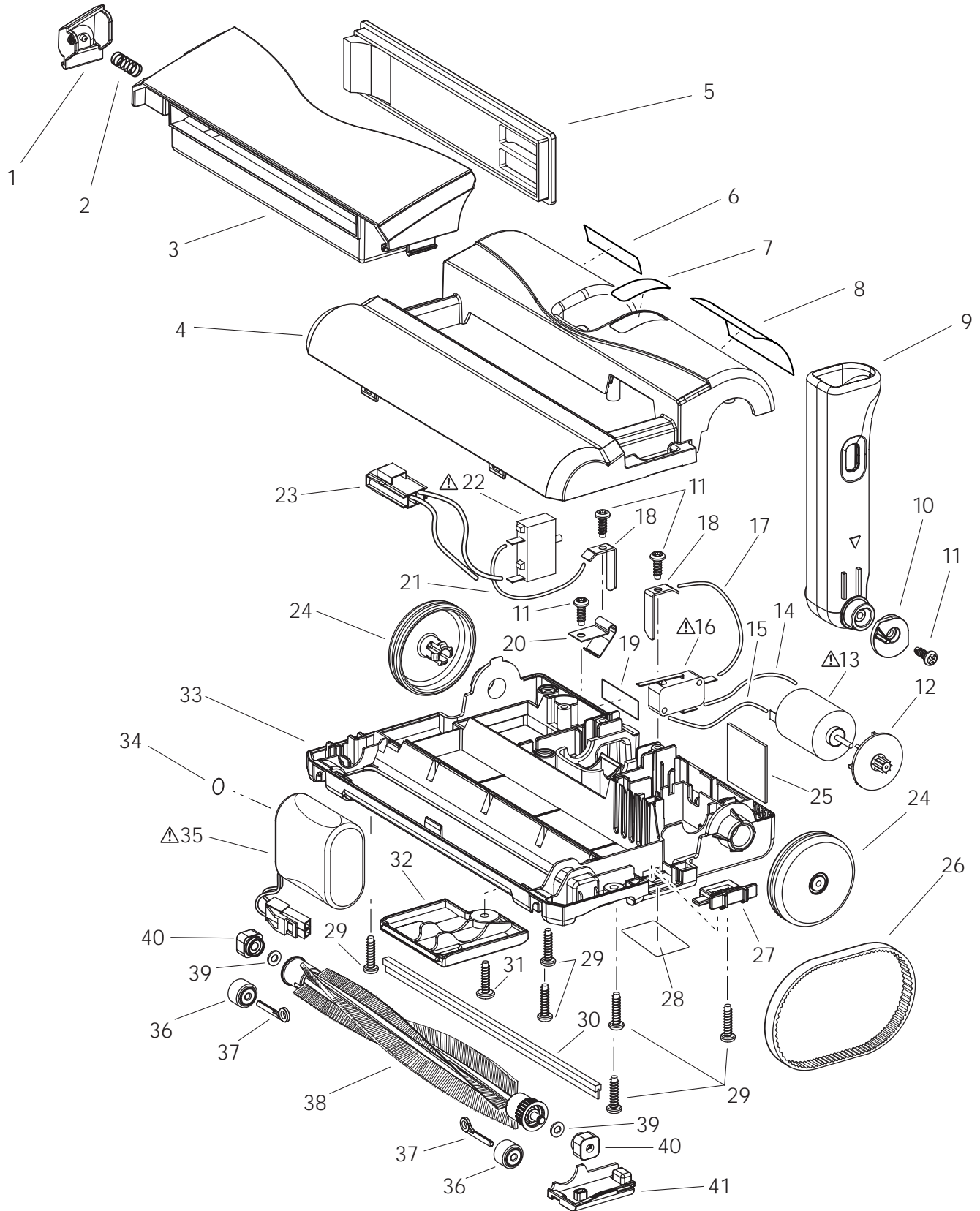
Wiring Diagram




Exploded View
(Main unit)

NOTE: The parts marked with Δ have special characteristics of safety,
if replace the Δ mark parts, use only SANYO specified parts.





SC-JS2B (U.S.A.)



Parts List
(Main unit)

NOTE: The parts marked with  have special characteristics of safety,
if replace the  mark parts,use only SANYO specified parts.

SC-JS2B (U.S.A.)

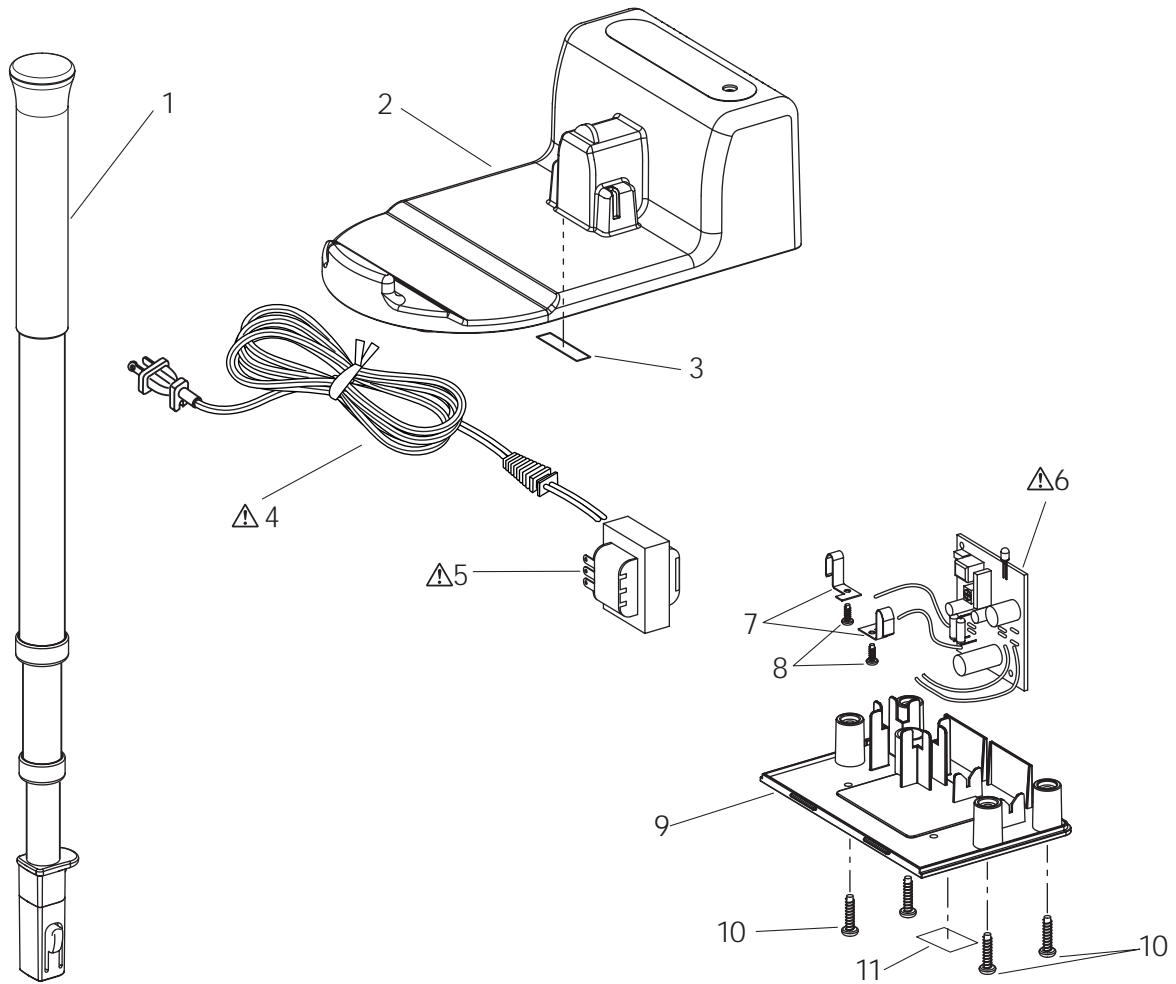
| Key No. | Parts No. | Description | Q'ty | Key No. | Parts No. | Description | Q'ty |
|---|-----------------|-------------------------------|------|---------|-----------|-------------|------|
| 1 | 663 005 2761 | CRAMP HOOK D | 1 | | | | |
| 2 | 663 005 2778 | CRAMP SPRING | 1 | | | | |
| 3 | 663 005 2785 | DUST BOX | 1 | | | | |
| 4 | 663 006 3897 | CASE UPPER (B-475) | 1 | | | | |
| 5 | 663 005 2808 | DUST FILTER ASSEMBLY | 1 | | | | |
| 6 | 663 005 3270 | CAUTION LABEL | 1 | | | | |
| 7 | 663 005 3287 | ORNAMENT PLATE | 1 | | | | |
| 8 | 663 005 3294 | CAUTION LABEL | 1 | | | | |
| 9 | 663 005 2846 | ROTARY PIPE (NN-07) | 1 | | | | |
| 10 | 663 005 2853 | LEVER | 1 | | | | |
| 11 | 663 000 7754 | SCREW (4X10) | 4 | | | | |
| 12 | 663 005 2877 | PULLEY | 1 | | | | |
|  | 13 663 005 2884 | DC MOTOR | 1 | | | | |
| 14 | 663 005 2891 | LEAD WIRE (RED) L=110 | 1 | | | | |
| 15 | 663 005 2907 | LEAD WIRE (BLACK) L=150 | 1 | | | | |
|  | 16 663 005 2914 | MICRO SWITCH | 1 | | | | |
| 17 | 663 005 2921 | LEAD WIRE (RED) L=120 | 1 | | | | |
| 18 | 663 005 2938 | CONTACT A | 2 | | | | |
| 19 | 663 005 2945 | LABEL A | 1 | | | | |
| 20 | 663 005 2952 | LEAF SPRING | 1 | | | | |
| 21 | 663 005 2969 | LEAD WIRE (BLACK) L=120 | 1 | | | | |
|  | 22 663 005 2976 | CIRUIT PROTECTOR (6.3A) | 1 | | | | |
| 23 | 663 005 2983 | CONNECTOR HOUSING ASSEMBLY | 1 | | | | |
| 24 | 663 005 2990 | WHEEL REAR (NN-07) | 2 | | | | |
| 25 | 663 005 3003 | AIR INLET FILTER | 1 | | | | |
| 26 | 663 005 3010 | TIMING BELT | 1 | | | | |
| 27 | 663 005 3027 | CRAMP HOOK R (N1-230) | 1 | | | | |
| 28 | 663 006 3903 | NAME PLATE | 1 | | | | |
| 29 | 663 005 3249 | SCREW (4X16) | 6 | | | | |
| 30 | 663 005 3058 | SUCTION KEEPER (NN-B) | 1 | | | | |
| 31 | 663 005 3065 | SCREW (4X16) | 1 | | | | |
| 32 | 663 005 3072 | BUTTERY COVER (NN-07) | 1 | | | | |
| 33 | 663 005 3089 | CASE LOWER (NN-07) | 1 | | | | |
| 34 | 663 006 3910 | CAUTION LABEL (RECYCLE) | 1 | | | | |
|  | 35 663 005 3317 | BUTTERY ASSEMBLY | 1 | | | | |
| 36 | 663 005 3102 | WHELL SMALL ASSEMBLY (NN-B) | 2 | | | | |
| 37 | 663 005 3119 | SHAFT FRONT (NN-B) | 2 | | | | |
| 38 | 663 005 3126 | ROTARY BRUSH COMP. INCL/39,40 | 1 | | | | |
| 39 | 663 005 8602 | WASHERY 4.2X7X0.5 | 2 | | | | |
| 40 | 663 005 3133 | BEARING HOLDER ASSEMBLY | 2 | | | | |
| 41 | 663 005 3140 | BRUSH RETAINER (NN-07) | 1 | | | | |

COLOR CODE:B-475(BLUE),N1-230/NN-07(GRAY),NN-B(BLACK)

Exploded View (Attachment)

NOTE: The parts marked with \triangle have special characteristics of safety, if replace the \triangle mark parts, use only SANYO specified parts.

SC-JS2B (U.S.A.)



Parts List

| Key No. | Parts No. | Description | Q'ty |
|---------------|--------------|----------------------------|------|
| 1 | 663 006 3927 | GRIP PIPE ASSEMBLY | 1 |
| 2 | 663 005 3164 | CHARGE STAND UPPER (NN-09) | 1 |
| 3 | 663 005 3331 | LABEL B | 1 |
| \triangle 4 | 663 006 3934 | POWER CORD (U2) | 1 |
| \triangle 5 | 663 006 3941 | TRANSFOMER | 1 |
| \triangle 6 | 663 005 3201 | CONTROL CIRCUIT ASSEMBLY | 1 |
| 7 | 663 005 3218 | CONTACT B | 2 |
| 8 | 663 000 2872 | SCREW (3X10) | 2 |
| 9 | 663 005 3232 | CHARGE STAND LOWER (NN-09) | 1 |
| 10 | 663 005 3249 | SCREW (4X16) | 4 |
| 11 | 663 005 3362 | NAME PLATE | 1 |
| | 663 006 3958 | INSTRUCTION MANUAL | 1 |

| Key No. | Parts No. | Description | Q'ty |
|---------|-----------|-------------|------|
| | | | |

COLOR CODE: NN-09 (GRAY)

For Parts or Service Contact
SANYO FISHER SERVICE CORPORATION.
21605 Plummer Street,
Chatsworth, CA 91311